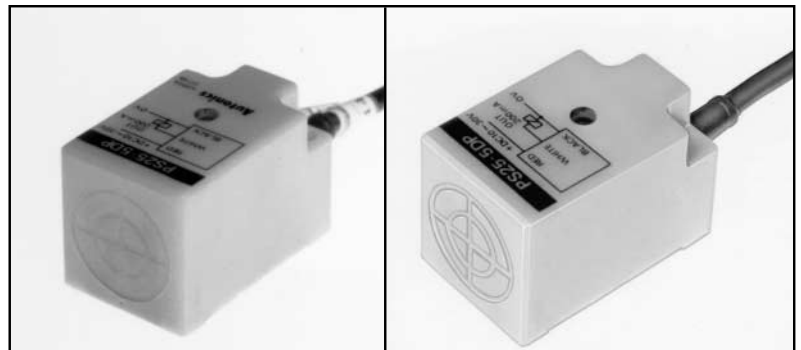


Series PS

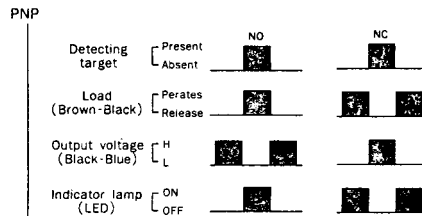
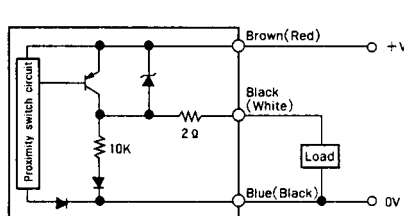
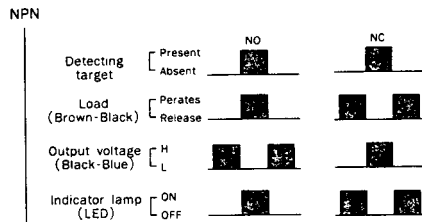
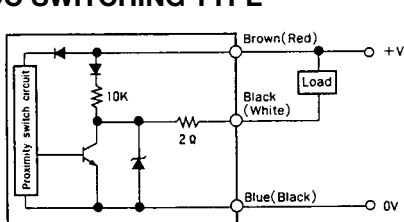


Square Inductive Proximity Sensors 30mm², 40mm²

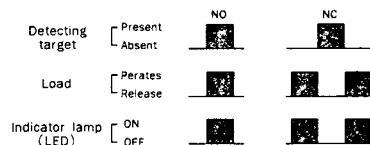
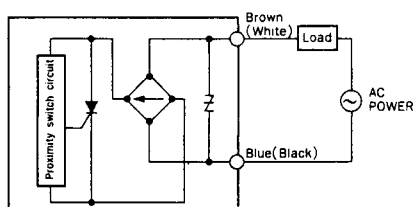


SIZE	30mm x 30mm Square		40mm x 40mm Square	
	TYPE	3 Wire DC	2 Wire AC	3 Wire DC
Maximum Sensing Distance (Sn)mm	15		20	
Standard Target Size mm	50 x 50 x 1		60 x 60 x 1	
Maximum Switching Frequency Hz	100	20	250	20
Supply Voltage (<10% Ripple VDC Models)	10-30VDC	90-250VAC	10-30VDC	90-250VAC
Leakage Current mA	—	< 2	—	< 2
Voltage Drop (ON State)	< 1.5VDC	< 10VAC	< 1.5VDC	< 10VAC
Outputs	NO or NC	NO or NC	NO or NC	NO or NC
Output Type	NPN or PNP	AC	NPN or PNP	AC
Housing Material	Plastic			
ORDERING INFORMATION	NPN NO	PS30 - 15DN		PS40 - 20DN
	NPN NC	PS30 - 15DN2		PS40 - 20DN2
	PNP NO	PS30 - 15DP		PS40 - 20DP
	AC NO		PS30 - 15A0	PS40 - 20A0
	AC NC		PS30 - 15AC	PS40 - 20AC

DC SWITCHING TYPE



AC SWITCHING TYPE



WIRING CAUTIONS

- Do not switch a lamp or motor load directly with the sensor as the inrush current will cause an overload. Always use a relay.
- Do not connect an AC sensor directly across the power supply without a load. This is a dead short and will permanently damage the sensor.
- For proper operation of an AC sensor, the load current must be at least 5mA. If load current is less than 5mA, connect a bleeder resistor across the load. Resistor value should be min. 23K_W 3W at 115VAC or min. 39K_W 5W at 220VAC.